



# Tutorial

---

## *A quick guide to using TEC MIDI Breath Controller with AVID Pro Tools*

Prepared for TEControl by J.Kristoffersen

January 2013

For more information on  
any of our products or  
services please visit us  
on the Web at:

[www.TEControl.se](http://www.TEControl.se)



The information in this document is subject to change without notice and does not represent a commitment on the part of TEControl. No part of this publication may be copied, reproduced or otherwise transmitted or recorded, for any purpose, without prior written permission by TEControl. All product and company names are <sup>TM</sup> or ® trademarks of their respective owners.

© TEControl, 2012. All rights reserved.  
Ragnarsv.2  
23192 Trelleborg  
Sweden

For general information about products: [info@TEControl.se](mailto:info@TEControl.se)  
For technical questions and enquires: [support@TEControl.se](mailto:support@TEControl.se)

For the most up to date information, visit the support pages at TEControl web site. There you can find documentation and latest software.

For more information on  
any of our products or  
services please visit us  
on the Web at:

[www.TEControl.se](http://www.TEControl.se)

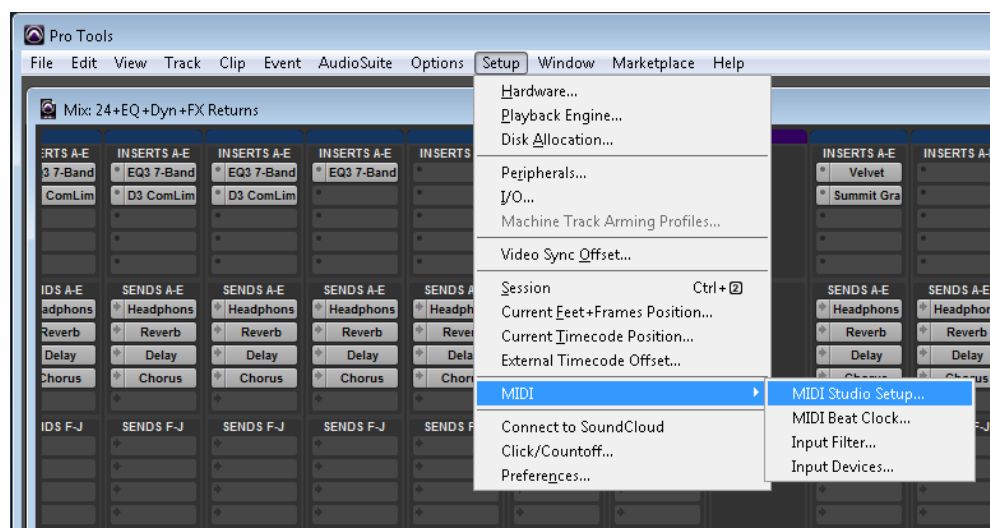


This tutorial will not cover the installation of the TEC MIDI Breath Controller, as this is covered by other documents found [here](#).

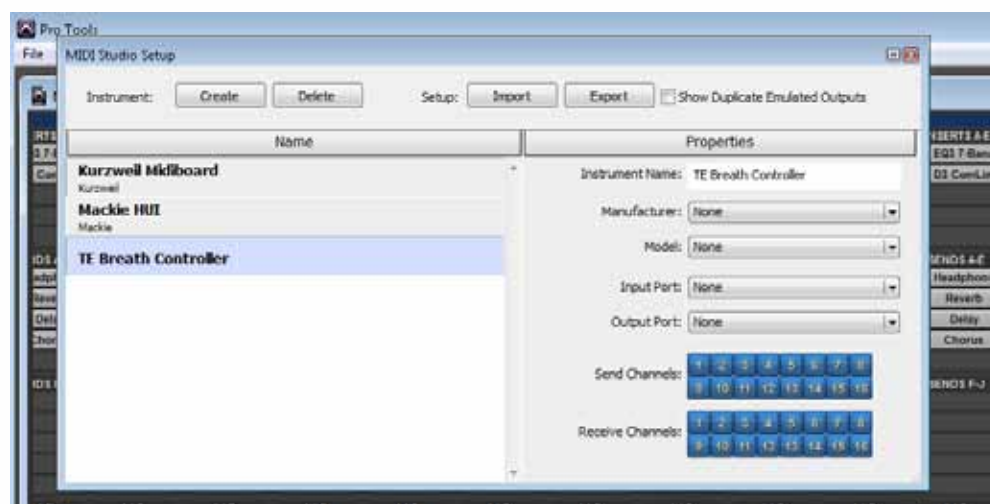
Presuming you have installed the unit on your computer and made sure it works correctly, I will show you several ways to use it in Pro Tools.

## 1 REGISTERING THE BC IN PRO TOOLS

After opening Pro Tools and before opening any sessions, go to: **Setup/MIDI/Midi Studio Setup**



Press **Create** and register the BC as shown:



This will add the BC to your list of MIDI devices used with Pro Tools.

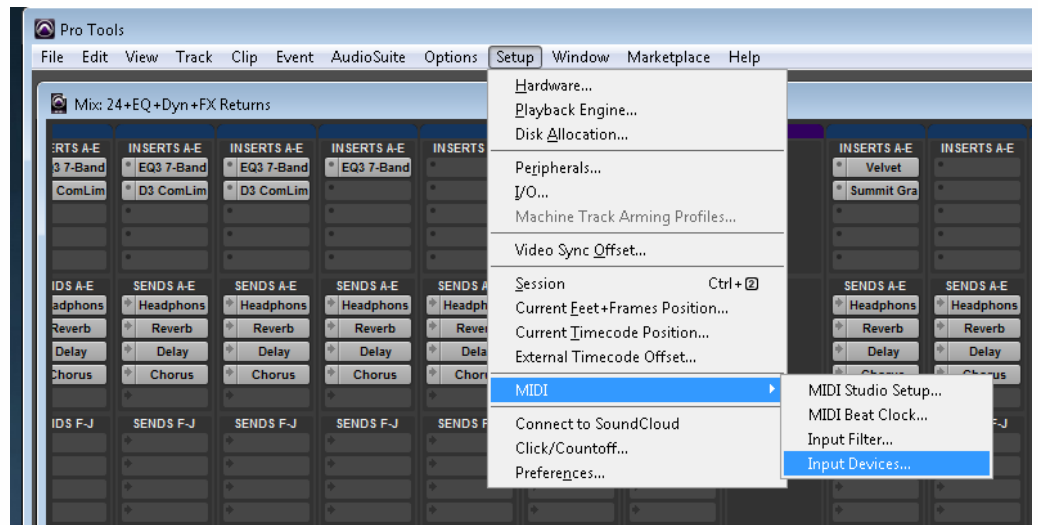
For more information on any of our products or services please visit us on the Web at:

[www.TEControl.se](http://www.TEControl.se)

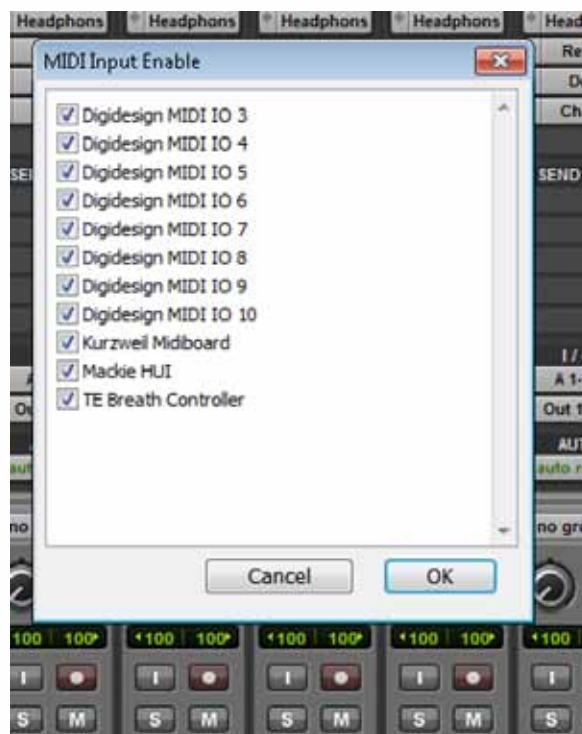


## 2 SETTING THE BC UP TO BECOME AN INPUT DEVICE

In order to use the BC as a MIDI input device in Pro Tools, open any session and go to: **Setup/MIDI/Input Devices**



Make sure the Breath Controller's box is checked in the list of MIDI devices as shown:



For more information on any of our products or services please visit us on the Web at:

[www.TEControl.se](http://www.TEControl.se)



After finishing these 2 steps, you are ready to use the BC in Pro Tools.

There are several ways to go about this. You could for instance use the BC as an input on a single MIDI channel as shown.



Choose **channel-1**, which is the default channel for the BC “out of the box” or choose **all channels**. You can also use the **TEC Configuration Utility** to change the input channel of the BC.

By routing this MIDI channel to any MIDI instrument playing brass or woodwind instruments, you can control its velocity attack using the BC. Most MIDI instruments or samplers recognize the breath control as MIDI CC 2 (MIDI controller number 2). If you want the BC to control other functions, you must change the MIDI control number using the **TEC Configuration Utility**.

For more information on any of our products or services please visit us on the Web at:

[www.TEControl.se](http://www.TEControl.se)



In Pro Tools, MIDI channels and Instrument channels can have only one input device at the time. In most cases, you would want to use the BC in conjunction with a MIDI keyboard and perhaps even with an expression pedal to be able to actually play the instrument and to control velocity attack and expression simultaneously.

One way of doing this would be to use more than one MIDI channel in Pro Tools, and route them all to the instrument you want to control. In the picture shown below, MIDI 1 has its input from the BC, MIDI 2 has its input from the MIDI keyboard, and MIDI 3 has its input from an expression pedal. They all have the same output, here illustrated by the “Native Instruments Kontakt 5” virtual instrument.



This setup also gives you the opportunity to record and edit the three MIDI inputs separately, which sometimes could simplify the recording and editing process.

For more information on any of our products or services please visit us on the Web at:

[www.TEControl.se](http://www.TEControl.se)





Another way of implementing more than one MIDI controller (input) at the time would be to route them directly to the instrument you want to record. In my example, one could choose **omni** as the MIDI channel input in **Kontakt 5** and it will receive inputs from all your connected MIDI controllers at the same time.

In a live situation, this would be the obvious choice, and also if you want to record audio directly, without recording MIDI simultaneously. In such a case, you could use an **Aux** or **Instrument Channel** in Pro Tools with the given instrument inserted; routing it directly to a stereo audio track.



If you are controlling an external instrument, such as a sampler, one way to set it up would be using my former setup with multiple MIDI channels and routing them through a MIDI Patch Bay.

### Technical Support

If you need technical support, contact TEControl at [support@tecontrol.se](mailto:support@tecontrol.se)

For more information on any of our products or services please visit us on the Web at:

[www.TEControl.se](http://www.TEControl.se)